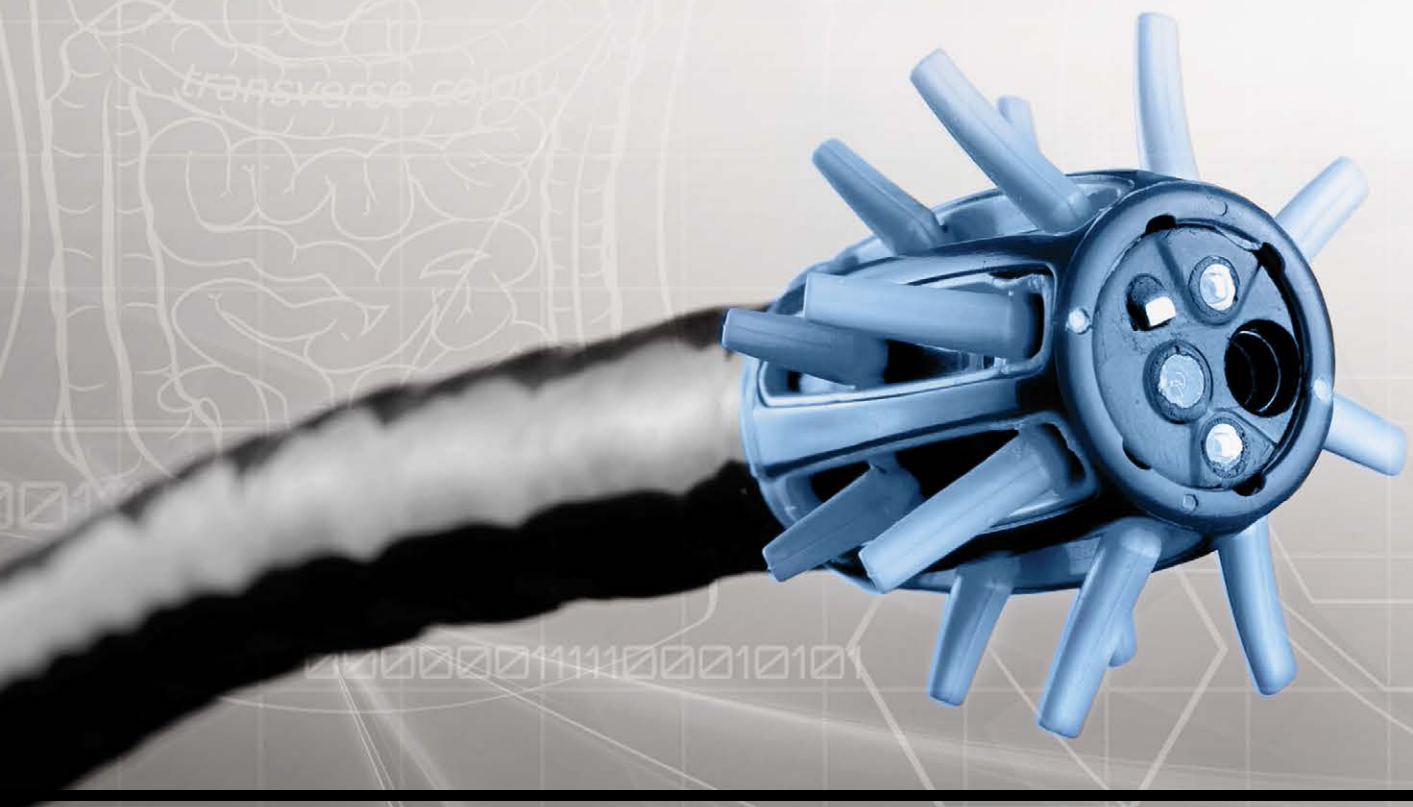




**Improving
visualisation
and tip control
during
colonoscopy.**





Designed to:

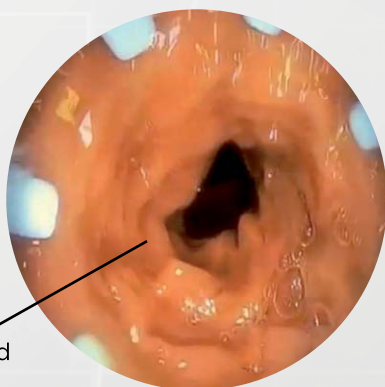
- Enhance visualisation of colonic mucosa
- Improve tip control during extubation
- Help clinicians perform EMR on difficult lesions.

The Endocuff is disposable and simply slides over the tip of the colonoscope distal to the bending section. It does not interfere with normal colonoscope function. Each individual flexible arm is hinged at its base so that during anal intubation and forward motion they automatically retract into the EndoCuff casing to create a smooth low friction surface.

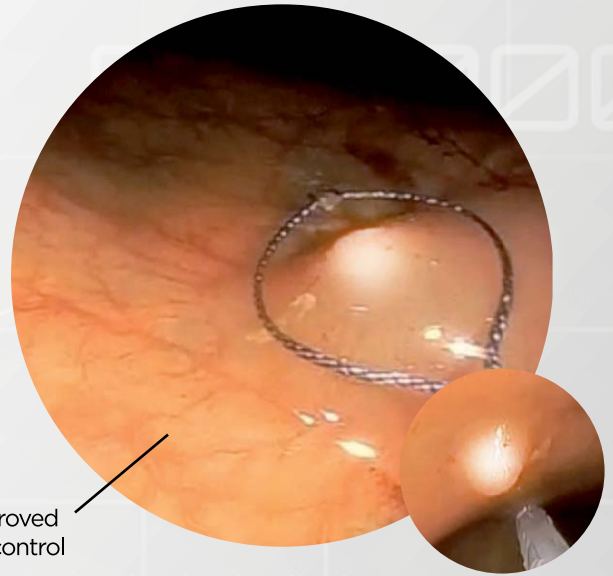
The Endocuff takes colonoscopy to a new level of detection with its innovative, intuitive and easy to use approach. The Endocuff gently opens the colon for easy inspection. Its unique array of flexible arms maintains the tip of the instrument in the centre of the lumen and retracts the mucosal folds to allow dynamic inspection as they move back into their resting position.

Endocuff provides better tip control so that the endoscopist is able to withdraw without sudden slippage. The flexures can be inspected in greater detail and concertinaed tracts of sigmoid colon are opened as the arms gently separate the folds to provide a clear view of the mucosa behind them.

Maintaining tip position during EMR and polypectomy is essential to ensure the procedure is performed safely and quickly. The Endocuff acts as a handbrake allowing optimisation of tip position during therapy and retrieval and helps to prevent movement as instruments are fed through the biopsy channel. Endocuff brings better tip control and vision to colonoscopy.



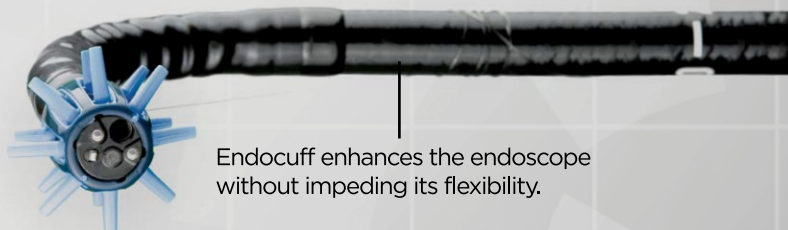
Improved Vision



Improved tip control

The advantages of Endocuff assisted colonoscopy:

- There is no interference of vision even when using the latest 170 degree colonoscopes.
- The mucosal folds are retracted automatically during colonoscope withdrawal, enabling their upstream surface and the mucosa between the folds to be viewed.
- The movement of the folds provides a dynamic picture so even the smallest of polyps can be identified by the play of light across the mucosal surface.
- Fold retraction begins before the fold is viewed so there is no need to keep re-intubating to manipulate folds that are beyond the tip.
- Larger folds, folds at a flexure or those in a wider part of the colon can be manipulated with ease.
- The Endocuff centres the colonoscope in the middle of the lumen preventing sudden slip back and annoying "red-out".
- The protrusions can be used to manipulate mucosal lesions and the environment around them during EMR. Lesions that are difficult to access and those hidden behind folds are now accessible for treatment.



Endocuff enhances the endoscope without impeding its flexibility.



Tel: +44 (0)113 242 0131 Email: tas.javed@arcmedicaldesign.com

Arc Medical Design Ltd, First Floor, 43 Park Place, Leeds, LS1 2RY, England